

# *CorrPlan*<sup>®</sup>

Capacity Planning and Finite Scheduling Software

# CORRPLAN® IS THE MOST ROBUST, FLEXIBLE, AND COMPLETE PLANNING SOLUTION FOR CORRUGATED BOARD MANUFACTURERS AND CONVERTERS

CorrPlan is a powerful and efficient converting scheduling solution designed specifically for the corrugated industry, and provides a streamlined and effective way to convert raw materials into finished corrugated products.

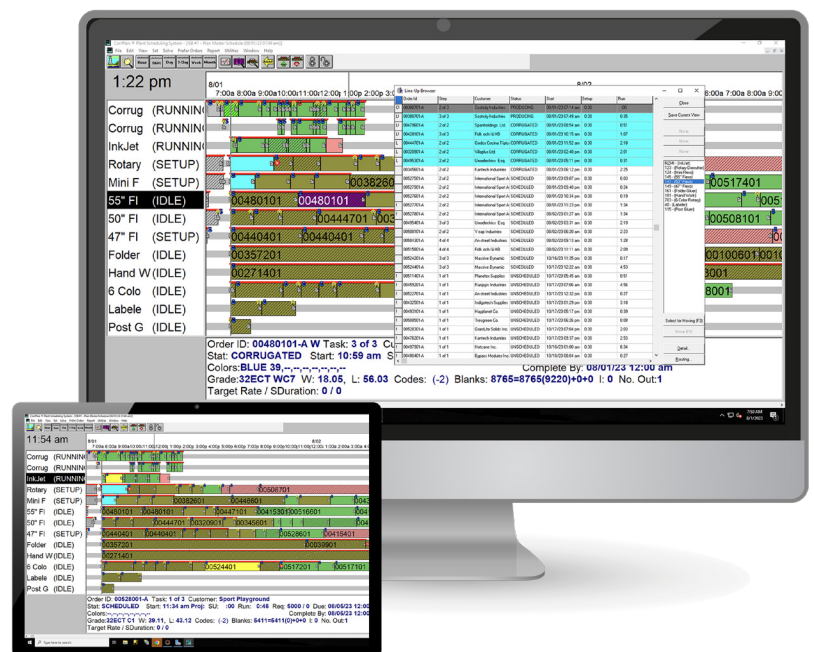
Available as part of CorrSuite, a complete suite of corrugated manufacturing solutions, or as a standalone module that can integrate with alternate ERP systems. CorrPlan offers extensive functionality that enables you to improve planning, adapt to fluctuating customer demand, and collaborate internally across all your manufacturing operations — all at a low total cost of ownership.

By utilizing advanced algorithms and automation, CorrPlan optimizes the scheduling process, taking into account various factors such as machine capacity, material availability, and production requirements.

CorrPlan determines the most efficient and profitable manufacturing schedule possible, based upon user-selected rules, tailored to your unique business processes and needs.

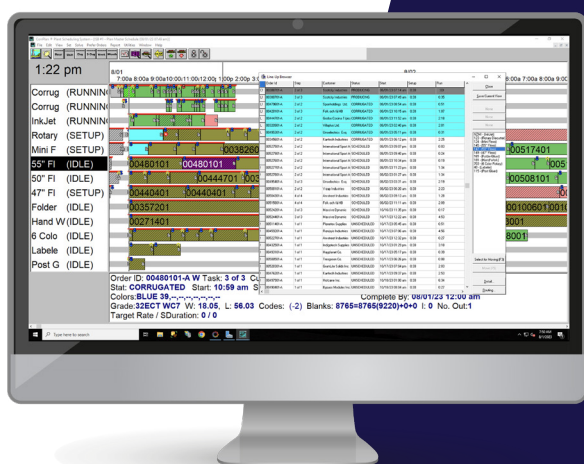
## Business benefits

- Increases profits and reduces waste
- Improves customer satisfaction
- Maximizes machine utilization
- Provides complete visibility of the production schedule and machine status
- Improves plant productivity and throughput
- Increases manufacturing flexibility



# QUICKLY ADAPT TO CHANGING DEMANDS AND IDENTIFY PROBLEMS BEFORE THEY AFFECT PRODUCTION.

Increase productivity and improve efficiency



CorrPlan enables corrugated manufacturers to create accurate and efficient production schedules, minimizing downtime, maximizing productivity, and reducing costs. With its user-friendly interface and comprehensive features, CorrPlan revolutionizes the way scheduling is done in the corrugated industry, ensuring smooth operations and improved profitability for businesses.

CorrPlan's AutoPlan™ algorithms use capacity-constrained resource analysis and job sequencing rules unique to the plant, to each work center and, where required, to specific customers, to generate plant schedules that consider on-time delivery, plant throughput, and individual work center efficiencies.

CorrPlan's intelligent scheduling engine schedules all orders in a single pass and presents you with the results in an intuitive and easily understood graphical format. You can review the schedule, evaluate "what if?" scenarios and proposed schedule changes, and assess the overall impact on plant production prior to making commitments.

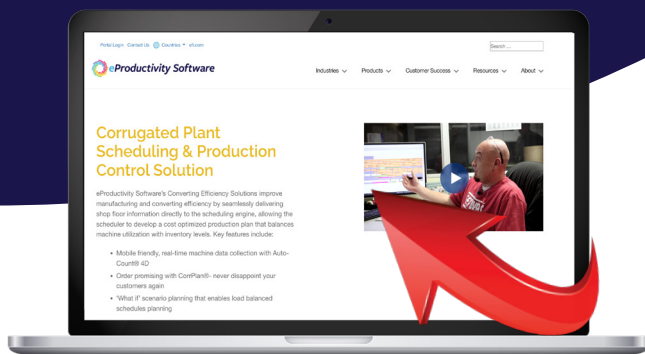
CorrPlan's intelligent alternate routing eliminates production bottlenecks, reduces downtime, and increases individual machine productivity. Full integration with the rest of our manufacturing solutions enables you to quickly adapt to changing customer demand and identify problems before they affect production.

## Order Promising

CorrPlan includes an Order Promising module that customer service reps can use to determine the earliest time that a customer's order can be manufactured. CSRs need only enter a product spec ID and quantity and CorrPlan will analyze the plant's available capacity based on the current bookings and master schedule.

## Key Benefits:

1. **Streamlined Production Planning:** CorrPlan revolutionizes the planning and scheduling of your corrugated operations and employs advanced algorithms and real-time data analysis to optimize production sequences, reducing setup times, minimizing changeovers, and maximizing throughput.
2. **Enhanced Efficiency:** With CorrPlan, you can eliminate bottlenecks, reduce idle time, and optimize resource allocation. CorrPlan's intelligent algorithms ensure optimal utilization of machines and personnel, leading to increased productivity and improved operational efficiency.
3. **Cost Savings:** By optimizing lineups and minimizing downtime, CorrPlan enables significant cost savings, reducing waste, optimizing material usage, and decreasing energy consumption, resulting in lower production costs and improved profitability.
4. **Improved Customer Satisfaction:** CorrPlan enables accurate production scheduling, ensuring on-time delivery and consistent quality. With streamlined operations and minimized lead times, you can meet customer demands promptly and reliably, fostering long-term customer satisfaction and loyalty.
5. **Real-time Visibility and Control:** Gain comprehensive visibility into your production process with CorrPlan's real-time monitoring and reporting capabilities. Track machine performance, monitor job progress, and make data-driven decisions to optimize production and address any issues promptly.
6. **Scalable and Customizable Solution:** CorrPlan is designed to adapt to your unique business needs. Whether you operate a small-scale facility or a large manufacturing plant, CorrPlan scales effortlessly, ensuring long-term value and flexibility.
7. **Seamless Integration:** CorrPlan seamlessly integrates with your existing software systems, such as ERP and MES, enabling smooth data exchange and eliminating manual data entry errors. Experience a cohesive and efficient workflow across your entire operation.



Scan here



to learn more



**eProductivity Software** is a leading global provider of industry specific business and production software technology for the packaging and print industries. The company's integrated and automated software offerings and point solutions are designed to enable revenue growth and drive operating and production efficiencies. eProductivity Software is headquartered in Pittsburgh, Pennsylvania with offices worldwide. With over thirty years dedicated to delivering best-in-class technology to the packaging and printing industries, it is the company's deep held philosophy that eProductivity Software succeeds when its customers thrive. For more information reach us at [contact@eproductivitysoftware.com](mailto:contact@eproductivitysoftware.com).

**CorrPlan<sup>®</sup>**  
Capacity Planning and Finite  
Scheduling Software  
JULY 2022 | EN | V2.0

*This publication is protected by copyright, and all rights are reserved. No part of it may be reproduced or transmitted in any form or by any means for any purpose without express prior written consent from eProductivity Software. Information in this document is subject to change without notice and does not represent a commitment on the part of eProductivity Software.*

Auto-Count, Digital StoreFront, DirectSmile, DSfdesign Studio, PrintFlow, PrintSmith, PrintSmith Site, Printstream, Radius, are trademarks of EPS US, LLC and/or its wholly owned subsidiaries or affiliates in the U.S. and/or certain other countries.

All other terms and product names may be trademarks or registered trademarks of their respective owners, and are hereby acknowledged.