



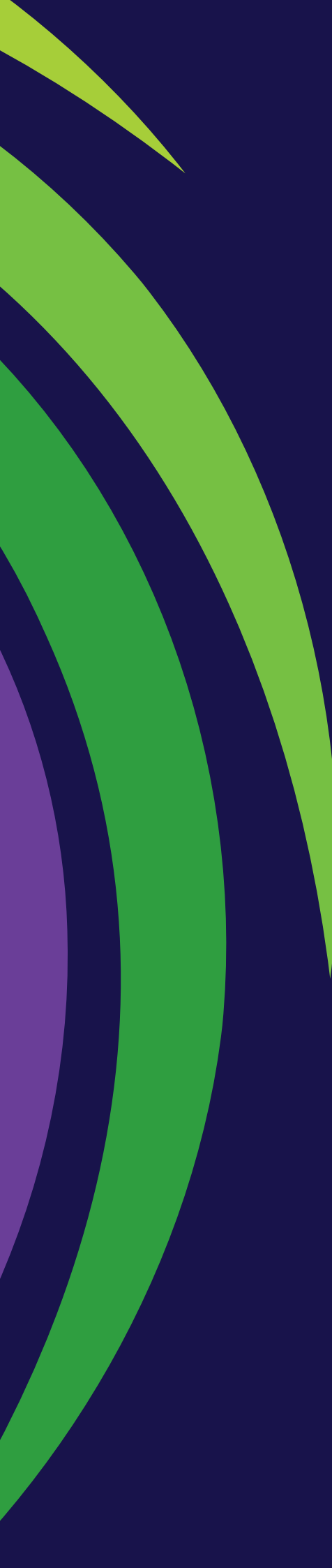
EMPOWER
EVOLVE
EXCITE

JOIN THE EVOLUTION

We are global leaders in transformation
technology for the packaging and
printing industries



eProductivity
Software



eProductivity Software (ePS) is a leading global provider of industry-specific business and production software technology for the packaging and print industries. Our integrated and automated software offerings and point solutions are designed to enable revenue growth and drive operating and production efficiencies.

We offer a broad range of solutions that target every segment of the packaging industry, including folding cartons, tag and label, flexible packaging, and corrugated packaging.

eProductivity Software also offers a broad range of solutions for the printing industry, including quick printers, digital print shops, in-plant print centers, commercial, publication, direct mail, retail signage, and super-wide format.

As organizations look to scale for growth, modernize their operations, and diversify their service offerings, we believe that we're uniquely positioned to serve as a trusted technology partner every step of the way and for years to come.

Our comprehensive suites are tailored to meet the business needs of customers of various sizes and specializations within the packaging and print industries so they can realize the benefits of a modern integrated system that is built for centralized functionality and reporting and ease of plug-and-play expansion. We also offer industry-enabling point solutions that can fully integrate with our systems or others to help companies address specific workflow gaps or accelerate growth opportunities through expansion.

CHALLENGING THE STATUS QUO

Packaging converters are used to working in a very unpredictable environment, full of unexpected changes and new demands coming from many directions.

Recent events added another layer to the already complex situation, and the existing challenges together with the new market expectations, put a lot of additional stress on the packaging converters to stay productive, profitable, and as a result, successful.

The quest for additional efficiency began. Research into the possibilities of maintaining customer satisfaction and continuously growing demand for more sustainable products is a neverending task. With the ongoing challenges of finding the right personnel and filling the gap of the overall staff shortage enhanced by permanent supply chain issues, the packaging manufacturers realize there is a need for an additional solution to keep business continuity intact.

Those numerous new challenges push the packaging manufacturers to the only sustainable outcome and drive the requirement to utilize the incremental efficiencies from previously undervalued business resources such as company processes.

A strategic move to improve cross-business visibility, interdepartmental transparency and develop more automated and simplified workflows in every aspect of business function unearths unquantified earlier vast deposits of efficiency and solidifies business continuity for decades.

HOW SUITE IT IS

Certified end-to end workflows that **empower**

eProductivity Software solutions are offered as end-to-end suites with out-of-the-box, industry-certified workflows, or as vertical-specific applications that augment generic MIS/ERPs and homegrown solutions with premium industry-enabling capabilities.

Our integrated and automated software offerings are designed to:

- Empower revenue growth
- Drive operating efficiencies
- Increase organization-wide visibility



Packaging Suite

Packaging Suite is a highly flexible, modular software solution designed specifically for label, folding carton, and flexible packaging (including film extruders) and a complete end-to-end business management ecosystem for the Packaging Industry.

During over 30 years of development Packaging Suite was purposely designed to solve numerous challenges the packaging industry has been facing over the years. As a result we have created leading solution that enables packaging manufacturers with:

- **Strengthened business continuity & resilience**
- **Improved quality & traceability**
- **Cross business visibility**
- **Advanced capacity utilisation**
- **Optimized inventory levels**
- **Increased overall cash flow**
- **Lowered transaction costs**

The Packaging Suite is the latest advancement in the evolution of the ePS product portfolio. It expands on the existing offerings with an even stronger focus on automation, optimization and new revenue generation.

The Suite's component-based approach utilizes integrated, smart software to automate and optimize your business from your clients' desktops throughout administration, production and delivery. This approach moves the emphasis away from individual operations and software packages to a holistic offering that combines smart software, end-to-end certified workflows and synchronized development/release cycles to deliver a comprehensive performance enhancing portfolio that scales with your needs.





DISCOVERING EFFICIENCY

Enterprise software for packaging and converting

As a business leader and entrepreneur, you're constantly looking for ways to improve your products and processes. Chances are, you're looking for a strategic partner with the same level of focus and commitment that you've put into your business. packaging and converting.

Radius ERP

Packaging Suite features Radius ERP at its core, a future-proof packaging enterprise resource planning (ERP) which provides core business functions such as costing, inventory information, order management, estimating, production planning, and scheduling.

Radius can be extended with many additional modules that enhance its functionality and further support business functions to ensure business continuity in challenging market conditions by maintaining peak productivity levels, maximizing business performance, and enabling enterprise-wide visibility.



Fuel an end-to-end ecosystem

Radius connects all parts of your enterprise. Tight integration with other components and third-party solutions allows you to configure a single, integrated business and production ecosystem.

- **Acquire new customers and orders with web-based, customer-focused solutions.**
- **Manage your entire workflow from item-specific estimating through to final invoicing.**
- **Prepare jobs by utilizing industry-leading, integrated CAD and pre-press solutions.**
- **Produce jobs with higher efficiency, optimized resource utilization, and improved visibility.**

Radius ERP and integrated components offer:

- Centralized task and communication tools
- Customer relationship management (CRM)
- 24/7 customer Web portals
- Electronic data interchange (EDI)
- Dynamic, intelligent estimating and planning
- Optimized layout and planning
- Inventory and purchasing
- Demand-forecasted MRP
- Global resource and production scheduling
- Tooling library and tracking
- CAD and prepress integration
- Production job management
- Direct machine interface (DMI)
- Shop floor data management
- Quality management
- Shipping and transportation
- Sales order management
- Financial accounting
- Job Costing
- Business Intelligence (BI)
- ERP customization toolkits

BECOME AN ENABLER

Estimating, scheduling, and data collection solutions for any ERP

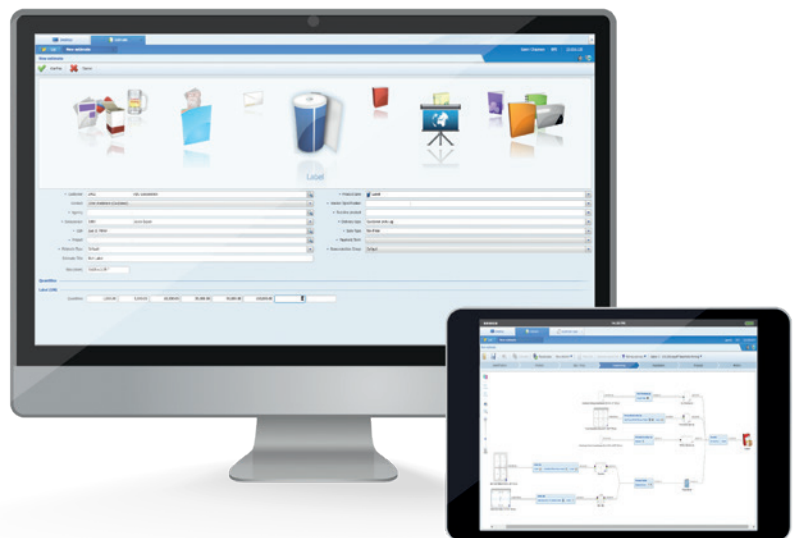
Designed to integrate seamlessly with any MIS/ERP, our Industry Enabling Applications give you the benefits of purpose-built solutions without the need to replace your existing systems.

Packaging and print organizations need tools that enable them to do business while reducing costs and complexities quickly and easily. It all starts with smart estimating and production planning software that automates the process of charting the best production path through your plant to maximize profitability. Imagine a system that thinks about a final product the way buyers do and can quickly assess and process millions of possible production combinations on existing equipment and produces jobs in the most efficient and cost-effective way.

iQuote[®]

INTELLIGENT ESTIMATING

Win more business by delivering faster, more accurate, more competitive, and more consistent quotes.



Auto-Count 4D[®]

REAL-TIME SHOP FLOOR DATA COLLECTION

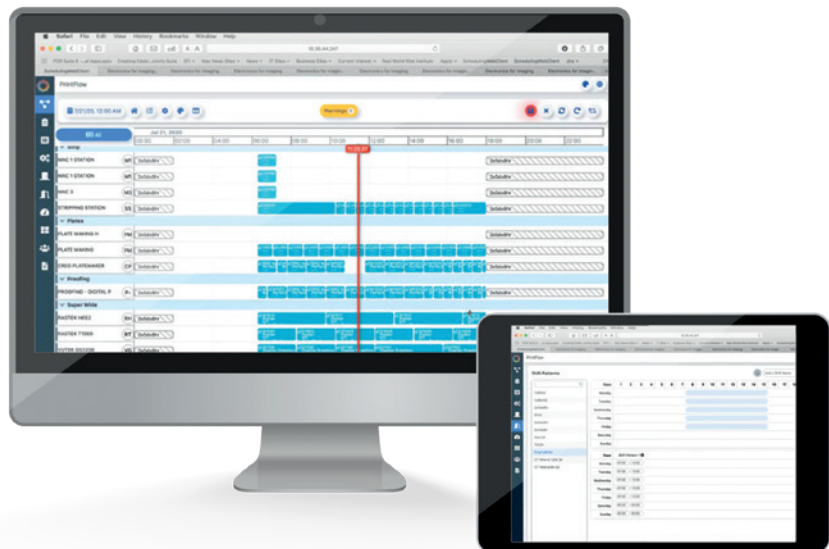
Achieve greater speeds, higher accuracy, and improved quality. Understand true manufacturing costs and make proactive, data-driven decisions anywhere, at any time, and from any device.



PrintFlow4D[®]

DYNAMIC SCHEDULING

Shift from reactive to proactive management by optimizing production sequences to maximize capacity and throughput and by reducing costly inefficiencies.



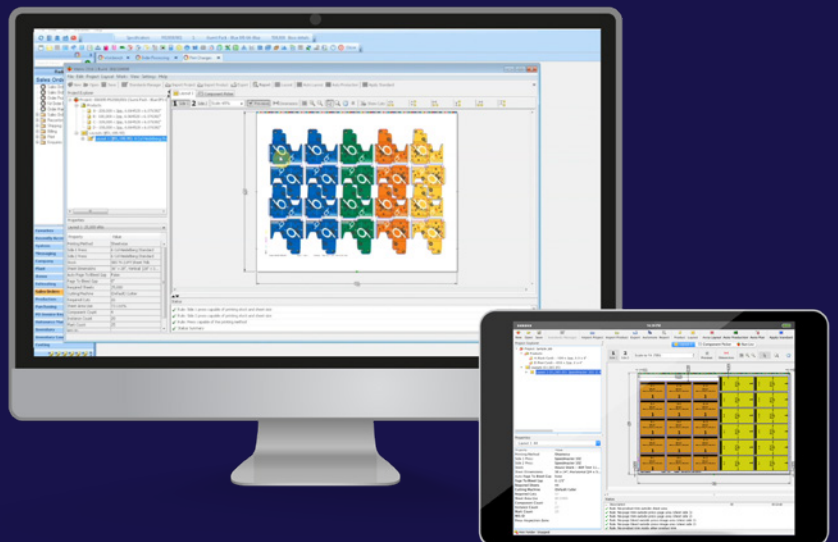
JUST ADD VALUE

From data analysis, to imposition, to workflow automation, eProductivity Software provides solutions that expand a business's capabilities and add value to all departments.

Metrix[®]

COST EFFECTIVE IMPOSITIONING

Metrix is a cost-driven imposition and planning solution designed for sheet fed and narrow web tag and label printing, folding carton production, and digital print.





PROCESS AUTOMATION

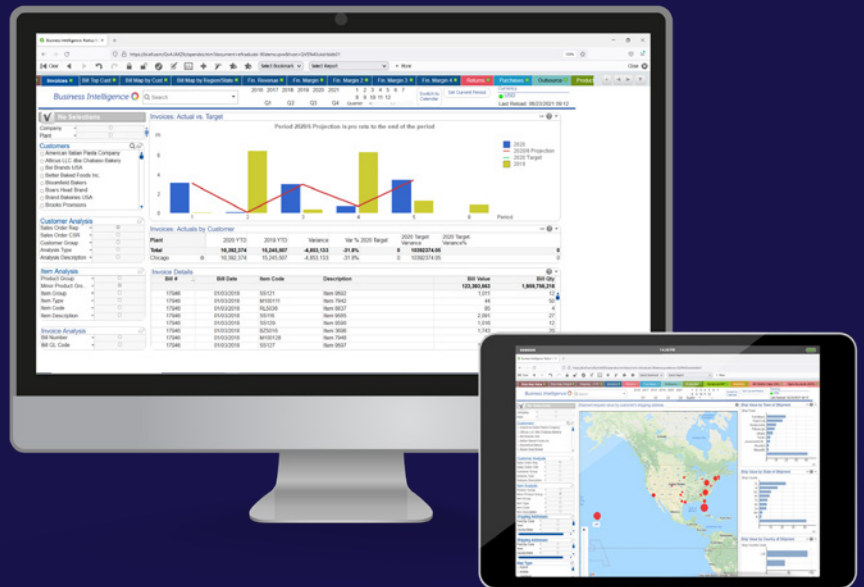
Automate routine, repeatable processes and simplify the entire production workflow with eProductivity Software's eFlow automation solution. Develop rule based automated processes, and increase staff productivity by enabling them to concentrate on much more meaningful and complex tasks that help grow successful business.



Business Intelligence

SINGLE LOCATION, COMPANY HEALTH INFORMATION CENTRE

Extract, collect and analyse accurate and live data from multiple data sources and have meaningful multi-dimensional reports of the current state of the business with a click of the button.



DEVELOP RELATIONSHIPS

Grow the relationship with your customers, with most advanced eCommerce, CRM, shipping, eProductivity Software solutions.

Market Direct PackCentral

eCOMMERCE FOR PACKAGING

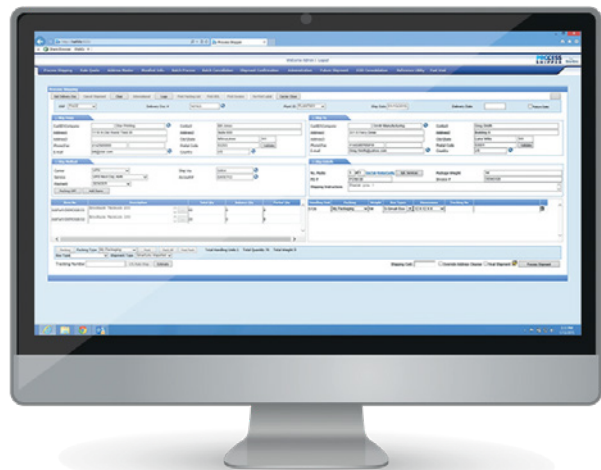
Automate and simplify client journey with eProductivity Software's eCommerce pack-to-print solution, **MarketDirect PackCentral**, Build strong, long-lasting and profitable customer relationships with a powerful and flexible packaging procurement solution designed for tag and label, folding carton, and corrugated box manufacturers.



Process Shipper

LOGISTICS MANAGEMENT

Streamline and automate your shipping operation with multi-carrier parcel management and shipping logistics software solution for mail, small parcel, LTL, local couriers, and more.



eCRM[®]

CRM FOR PACKAGING INDUSTRY

Enable sales to develop a relationship with prospects and customers, gather the necessary information, and deliver accurate quotations in record time with a tool that is specifically developed for the packaging converters.





GROWING THE KNOWLEDGE

Discovery, Solution Design by a Packaging Industry Expert.

We work hard to deliver products that are as intuitive to use as they are functional, which does lower the barrier to entry from a technical standpoint. We understand, however that technical expertise, bandwidth, are very real concerns and constraints for many companies as they look to implement a new software solution in their organization—whether it's a full end-to-end suite or point solution.

Therefore, we work closely with our customers during the evaluation process to understand their company's specific needs so that we can customize the software, level of employee training, and assistance (e.g., hands-on database building, KPI creation, etc.) to help ensure they are able to get the best possible return on their investment. Also, cloud-based offerings allow our customers to focus on their business and customer needs without having to implement and maintain the systems and infrastructure necessary to run their day-to-day print operations.

DESIGNING NEW REALITY

Four phases make up the successful installation of the EPS Packaging Suite. Discovery, Walkthrough, Training and Implementation. These phases are all important in bringing your company to a successful go live. The following activities are planned by our Project Management team in conjunction with Software Solution Leads and Subject Matter Experts.

An initial Discovery is performed by the Software Solution Lead (SL). This Discovery is one of the most important parts of the project. By understanding your current workflows and then comparing them to the future state workflows we identify the change management that will occur - The Solution Design.

From this initial Discovery our Software Solution Leads and Subject Matter Experts (SME) create a working database using your data, then walkthrough your data with new best practice workflows agreed in the Solution Design. Test and Use cases are also developed to assist you in testing the new workflows.

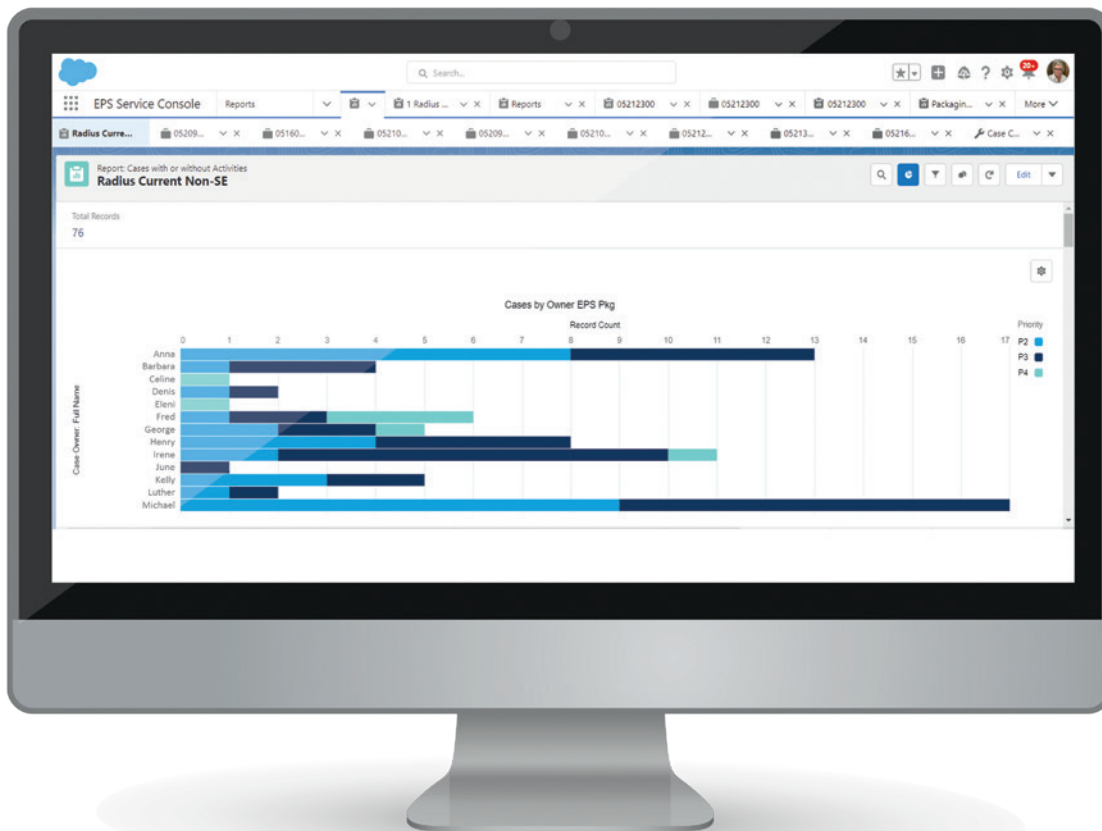
Training then begins on all the features within the EPS Packaging Suite by the SME. After training EPS will start the Implementation phase. This phase puts all that EPS has learned about your organization from the Solution Design through Training into a practical plan getting you to go live.

The implementation phase is one of the most critical in a project and as such are guided and planned by the Software Solution Leads. The EPS Software Solution Lead typically has 20+ years of Packaging Industry and EPS Packaging Software experience and guides your company in the industry best practices.

BUILDING SUCCESS TOGETHER

Customer services and after sale relationship

With over thirty years dedicated to delivering best-in-class technology to the packaging and printing industries, it is our deeply held philosophy that we succeed when our customers thrive. Whether you need help resolving an issue, keeping your software up to date, or are thinking of incorporating additional ePS solutions into your environment to achieve your business goals, we're here with you every step of the way.



STAY CONNECTED

There is only one real reason why our products are so successful - all our products are long term client-led projects with all improvements and ideas sourced from the best industry experts - yourselves. What we are exceptionally good at is listening to our customer feedback.

User Communities

The success of our portfolio of solutions is founded on the continuous and close collaboration between our clients and our team. We do everything we can to ensure our conversations continue beyond the go-live date. Maintaining a close relationship is the true source of our success. We teach, we guide, we mentor, and we listen to all the feedback from our customers.

To understand your requirements, we created many channels for you to share ideas and possible solutions. When joining our ePS Communities, you will enter the inner circle of hundreds of likeminded people who provide support, and suggestions, discuss future directions of development and provide insights to develop better products and, as a result, better work infrastructure.



Connect - Annual Conference

Every year, over a thousand members of our communities meet together for an event that's designed for them! By attending the annual user conference **CONNECT**, explore the latest advancements with our solutions, learn best practices from our product experts, network with your industry peers, discover cutting-edge offerings from our sponsors, and gain full access to the eProductivity Software leadership team.

