



Complete Corrugated Solutions



A Trusted Partner

In the ever-evolving corrugated industry, tailored solutions that address the sector's unique demands are paramount. With a legacy dating back to the early 1980s, eProductivity Software (ePS) is a stalwart partner providing industry-specific solutions.

Leveraging decades of experience, we have established ourselves as a trusted partner, offering comprehensive solutions to the distinctive challenges encountered by corrugated board manufacturers and box converters.

Our deep understanding of the intricacies of the packaging market, coupled with our commitment to innovation, ensures that our clients stay ahead in this dynamic and demanding landscape.

We know corrugated

We understand that every corrugated manufacturer's needs are unique. That's why we offer a comprehensive suite of solutions tailored to the industry's specific demands. Whether you're a Sheet Feeder, a Sheet Plant, or a full Box Plant, our offerings cover the entire spectrum of operations, from estimating and order entry to production reporting and supply chain execution.

What sets us apart is our commitment to providing flexibility and scalability. We offer a full suite of integrated solutions and standalone industry-enabling applications that seamlessly integrate into your existing systems. This approach empowers you to choose the functionalities you need while ensuring seamless scalability as your business grows and evolves.

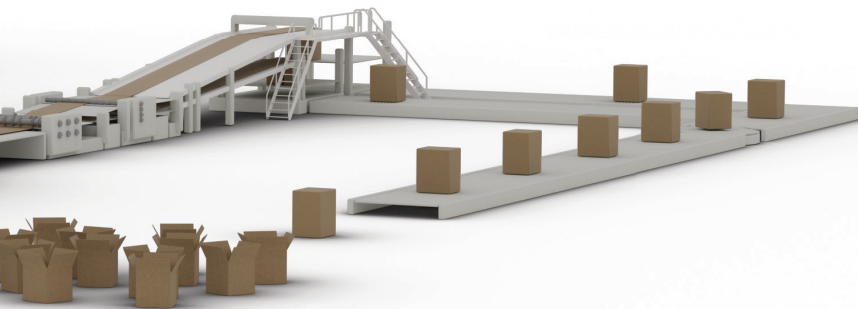


From roll stock to box

As a corrugated manufacturer, your efficiency and profitability hinge on seamless integration and optimization of every operational facet. Our Enterprise Resource Planning (ERP) and Manufacturing Execution Systems (MES) solutions deliver end-to-end control, from estimating and order entry to shipment planning and supply chain execution.

With robust features for roll-stock inventory management, corrugator process control, and converting scheduling, we empower your team to streamline production, ensure quality, and precisely meet customer demands.

Harness the power of real-time data collection, WIP tracking and production reporting for agile decision-making and sustained growth in a competitive market landscape.



Unbox the Full Potential of your Corrugated Operations

The Corrugated Suite, also known as CorrSuite, is a comprehensive suite of industry-specific solutions designed specifically for the corrugated industry.

It encompasses a range of tools and software applications, including Enterprise Resource Planning (ERP) and Manufacturing Execution Systems (MES). The suite is tailored to meet corrugated manufacturers' unique needs and challenges and provides a complete solution to streamline and optimize their operations.

The ERP component helps manage various business aspects, such as inventory, sales, purchasing, and financials. In contrast, the MES component focuses on the execution and control of manufacturing processes, enabling real-time monitoring, production scheduling and quality management.

By utilizing CorrSuite, companies in the corrugated industry can enhance their efficiency, productivity, and overall performance.

Roll Stock Management & Analysis

Did you know that many corrugated manufacturers face substantial financial losses yearly, ranging from \$100,000 to \$1 million, due to less-than-ideal roll stock being utilized?

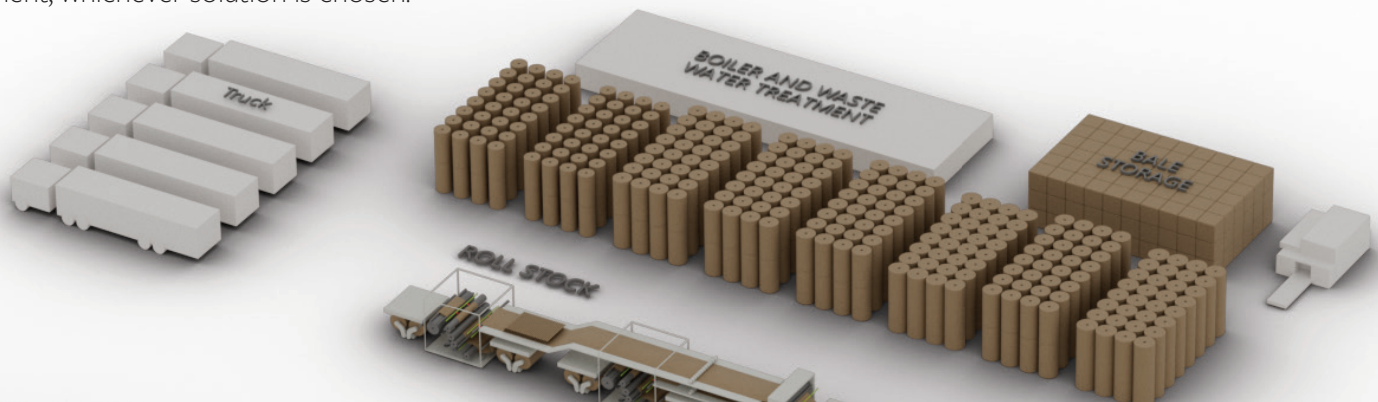
Our roll stock management solution offers effective paper management tailored to any business need. Our solutions use RFID or barcode technology to help reduce paper stock levels by enabling the use of partially consumed rolls, also known as part rolls or butt rolls, with full integration into inventory and supply chain management systems. These unique features ensure that we support a rapid return on investment, whichever solution is chosen.

A lean initiative

Our Roll Stock Analysis (RSA) service provides significant cost savings and improvements to your business's paper utilization. Using our expertise, we evaluate the previous year's production and re-plan it. We then identify the optimum way to produce your orders with the fewest number of paper grades and changes on the corrugator.

“We can consolidate and optimise our paper stock which has been a massive cost-saving for the business.”

FEPA S.p.A., Italy



Unparalleled Efficiency and Transformative Growth

The Corrugated Business System (CBS) is designed to revolutionize your manufacturing operations, delivering up to 25% greater efficiency than competitor solutions.

CBS, our corrugated-specific Enterprise Resource Planning (ERP) system, gives you the tools and capabilities to empower your team and connect all elements of your plant, operation, and personnel through an intuitive, visual user interface coupled with a highly customizable productivity dashboard - Workbench.

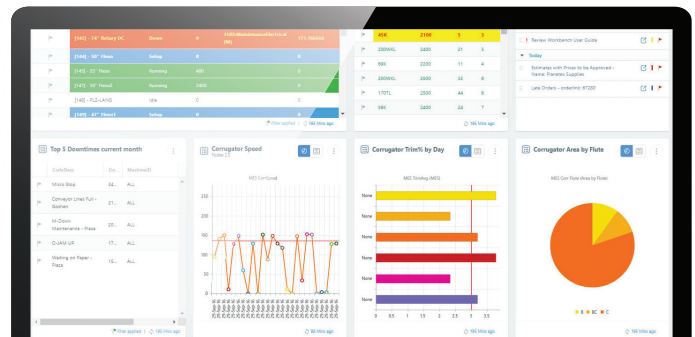
CBS empowers your business with a comprehensive suite of features that continually evolve to meet your changing needs. Our commitment to ongoing innovation ensures that you stay at the forefront of technology, enabling you to optimize your operations and drive remarkable results.

With CBS's modern, intuitive interface, discover the future of corrugated packaging management. Built as a browser-based solution, our platform offers a seamless user experience, providing effortless navigation and empowering your team to work efficiently.

Supported by a dedicated team of engineers and developers in San Diego and Bangalore, India, we provide world-class support to ensure your success. Our experts are ready to assist you every step of the way, ensuring you get the most out of CBS.

CBS is a highly configurable solution that allows you to adapt the system to your unique business requirements. As your needs change, CBS adapts, ensuring agility and flexibility in a dynamic industry.

Unleash the full potential of your operations with CBS, the industry-leading ERP solution that combines efficiency, innovation, user-friendliness, and adaptability. Our unmatched software empowers your team, streamlines your processes, and elevates your competitive advantage.



CorrTrac: Seamless Inventory Control

CorrTrac is a comprehensive roll stock inventory management solution specifically designed for the industry.

It provides an efficient and streamlined approach to tracking and managing the inventory of roll stocks used in corrugated production.

With CorrTrac, companies can monitor stock levels, track usage, and optimize inventory management processes.

CorrTrac offers real-time visibility into the status and location of rolls, ensuring accurate inventory counts and reducing the risk of running out or overstocking. By implementing CorrTrac, businesses can enhance operational efficiency, reduce costs, and improve inventory control.

Eliminate inventory errors:

CorrTrac eliminates inventory errors by providing accurate, real-time data on roll stock. With automated tracking and monitoring, CorrTrac ensures that inventory counts are precise and up to date. By eliminating manual entry errors and discrepancies, CorrTrac enables you to maintain inventory accuracy and make informed decisions.

Reduce corrugator downtime:

CorrTrac plays a vital role in reducing corrugator downtime. By providing visibility into roll stock availability and consumption, CorrTrac enables you to plan production efficiently. You can avoid unexpected stock shortages, minimize machine idle time, and ensure uninterrupted corrugator operations. With CorrTrac, you can maximize machine uptime and productivity.

Reduce paper waste:

CorrTrac helps reduce paper waste by optimizing roll stock usage. With accurate roll tracking and consumption data, CorrTrac enables you to allocate rolls effectively, minimizing waste and reducing unnecessary stock changes. CorrTrac empowers you to achieve sustainability goals while reducing costs associated with paper waste.



Visibility of roll stock from order to consumption:

CorrTrac provides end-to-end visibility of roll stock, from order placement to consumption. You can track the entire lifecycle of each roll, including its location, usage, and remaining quantity. This visibility ensures accurate inventory management, efficient order fulfillment, and timely replenishment, improving customer service and satisfaction.

Plant-wide traceability of rolls used on orders:

CorrTrac offers plant-wide traceability of rolls used on orders. You can easily track which rolls were used for specific orders, ensuring accountability and quality control. This traceability feature enables you to identify issues or discrepancies, streamline production processes, and enhance operational efficiency.

Manage butt roll inventory and tags easily:

CorrTrac simplifies the management of butt roll inventory and tags. Our solution enables you to track and organize butt rolls, ensuring easy retrieval and utilization. By streamlining the management of these critical resources, CorrTrac enhances efficiency, reduces waste, and optimizes roll stock usage.

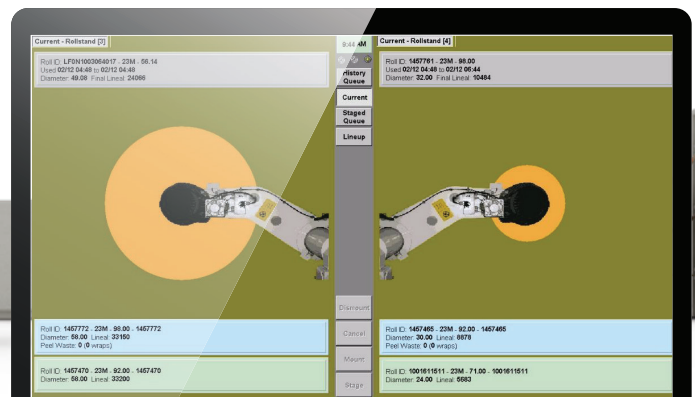
Comprehensive reporting and analytics:

CorrTrac offers robust reporting and analytics capabilities. With customizable dashboards and reports, you can gain valuable insights into roll stock performance, usage trends, and inventory optimization opportunities. CorrTrac's analytics empower you to make data-driven decisions, identify areas for improvement, and continuously enhance your inventory management practices.

CorrTrac's roll stock inventory management solution goes beyond traditional inventory control; it eliminates errors, reduces downtime, minimizes waste, and provides end-to-end visibility and traceability. Choose CorrTrac and take control of your roll stock inventory for increased efficiency, productivity, and business success.

“Our inventory has never been so easy to navigate, nor so lean!”

FEPA S.p.A., Italy



Peak Performance with **CorrTrim**

CorrTrim is an innovative corrugator scheduling solution specifically designed for the industry. It is a software system that optimizes and streamlines the corrugator scheduling process. By utilizing advanced algorithms and data analysis techniques, CorrTrim helps companies efficiently plan and manage their production schedules, resulting in increased productivity and reduced downtime.

CorrTrim considers various factors, such as machine capacity, order priorities, material availability, and production constraints, to generate optimized schedules that maximize output and minimize costs. It ultimately empowers businesses to improve their operational efficiency and deliver high-quality products to their customers in a timely manner.

Schedule Just-in-Time (JIT) for greater production flexibility:

CorrTrim enables just-in-time (JIT) scheduling, allowing you to adapt to changing demand patterns and achieve greater production flexibility. With CorrTrim, you can align production schedules with real-time demand, reducing inventory levels and maximizing efficiency.

Automatically flex cost and control parameters for optimal schedules:

CorrTrim's intelligent algorithms automatically flex cost and control parameters to find the best schedule for a given order pool. By considering multiple factors, including material availability, machine capacity, and order priorities, CorrTrim generates optimized schedules that balance cost-efficiency and customer requirements.

See the cost of your decisions before making them:

With CorrTrim, you can visualize the cost implications of different scheduling decisions. CorrTrim provides real-time cost estimation, allowing you to evaluate the financial impact of various scenarios and empowering you to make informed decisions that align with your business goals.



Reduce downtime and minimize paper changes:

CorrTrim optimizes your production schedules to minimize downtime and paper changes. By streamlining changeovers, optimizing cutting patterns, and reducing setup times, CorrTrim maximizes machine uptime and minimizes disruptions, increasing productivity and reducing costs.

Reduce waste by decreasing side-trim:

CorrTrim's intelligent algorithms minimize side-trim waste by optimizing cutting patterns and reducing unnecessary paper waste. By precisely calculating the optimal paper required for each order, CorrTrim helps reduce waste significantly, saving costs and enhancing sustainability efforts.

Monitor roll usage, cost results, and key performance indicators:

CorrTrim provides comprehensive monitoring capabilities, allowing you to track roll usage, cost results, and other critical business performance indicators. With real-time visibility into crucial metrics, you can identify areas for improvement, make data-driven decisions, and continuously enhance your operations.

View global trim results for easier decision-making:

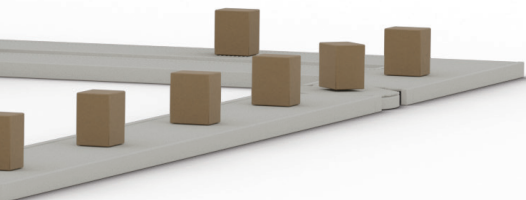
CorrTrim enables you to view global trim results, providing a holistic perspective for easier decision-making.

By visualizing the overall trim outcomes and analyzing the impact on efficiency, waste reduction, and cost savings, you can make well-informed decisions that optimize your operations.

CorrTrim's corrugator scheduling solution combines efficiency, flexibility, and cost control, empowering your business to thrive in a dynamic market. Choose CorrTrim and unlock the potential of streamlined scheduling, cost optimization, waste reduction, and data-driven decision-making.

“CorrTrim increases capacity, enhances the continuity of the processes and adapts rapidly to client changes, thus reducing costs.”

Cartonesa, El Salvador



Optimize Operations with CorrPlan

CorrPlan is a powerful and efficient converting scheduling solution designed specifically for the corrugated industry. It provides a streamlined and effective way to convert raw materials into finished corrugated products. By utilizing advanced algorithms and automation, CorrPlan optimizes the scheduling process, considering various factors such as machine capacity, material availability, and production requirements.

CorrPlan enables corrugated manufacturers to create accurate and efficient production schedules, minimizing downtime, maximizing productivity, and reducing costs.

With its user-friendly interface and comprehensive features, CorrPlan revolutionizes scheduling, ensuring smooth operations and improved business profitability.

Streamlined production planning:

CorrPlan revolutionizes the planning and scheduling of your corrugated operations. CorrPlan employs advanced algorithms and real-time data analysis to optimize production sequences, reduce setup times, minimize changeovers, and maximize throughput.

Enhanced efficiency:

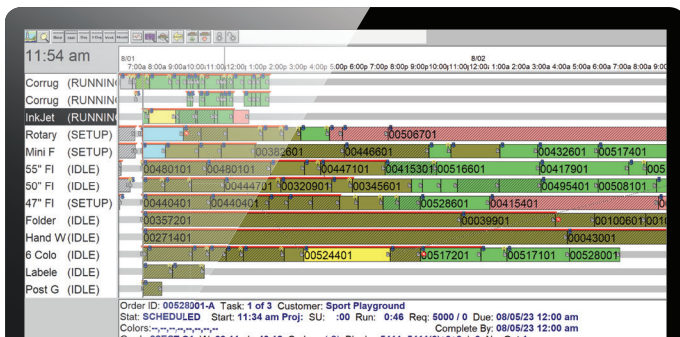
With CorrPlan, you can eliminate bottlenecks, reduce idle time, and optimize resource allocation. CorrPlan's intelligent algorithms ensure optimal utilization of machines and personnel, leading to increased productivity and improved efficiency.

Cost savings:

By optimizing lineups and minimizing downtime, CorrPlan enables significant cost savings. It reduces waste, optimizes material usage, and decreases energy consumption, resulting in lower production costs and improved profitability.

Improved customer satisfaction:

CorrPlan enables accurate production scheduling, ensuring on-time delivery and consistent quality. With streamlined operations and minimized lead times, you can meet customer demands promptly and reliably, fostering long-term customer satisfaction and loyalty.



Real-time visibility and control:

CorrPlan's real-time monitoring and reporting capabilities give you comprehensive visibility into your production process. Track machine performance, monitor job progress, and make data-driven decisions to optimize production and address any issues promptly.

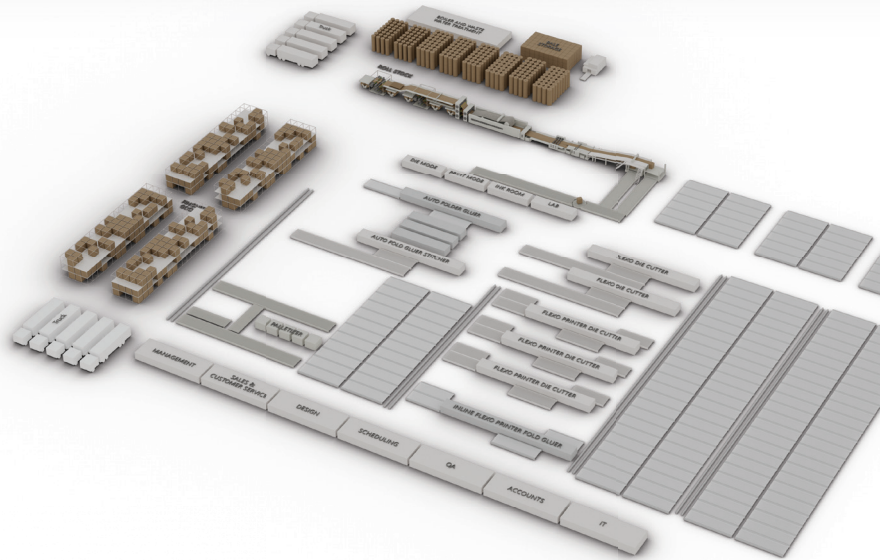
Scalable and customizable solution:

CorrPlan is designed to adapt to your unique business needs. Whether you operate a small-scale facility or a large manufacturing plant, CorrPlan scales effortlessly, ensuring long-term value and flexibility.

Seamless integration:

CorrPlan seamlessly integrates with your existing software systems, such as ERP and MES, enabling smooth data exchange and eliminating manual data entry errors. Thus, you can experience a cohesive and efficient workflow across your entire operation.

With CorrPlan, you unlock the potential of your corrugated production process, achieving unparalleled efficiency, cost savings, and customer satisfaction. Stay ahead of the competition, optimize your operations, and propel your corrugated business to new heights of success.



“What took several minutes, or longer, on the old system now takes seconds with CorrPlan.”

Atlantic Packaging, Canada

10% Increase in work center capacity utilization

15% Reduction in inventory turnover time

12% Reduction in WIP

Say Goodbye to Manual Processes and Hello to Efficiency!

Elevate your corrugated plant floor operations with real-time plant floor data collection to simplify data collection and streamline QA processes.

Experience a revolutionary approach to streamlining quality assurance checks on the plant floor. Seamlessly integrating with your workflow, our real-time plant floor data collection provides instant access to critical production data and bolsters your capacity to detect and resolve issues in real time.

This proactive approach maximizes operational efficiency and minimizes downtime, presenting a paradigm shift in addressing challenges. With automated data collection in real-time, precision takes center stage, empowering you to make well-informed decisions that keep your converting machines running at peak performance.

Real-time monitoring

Get accurate and up-to-date run-order and machine status information, allowing you to make informed decisions and plan proactively.

Enhance quality control

Tailored quality questionnaires and product tests simplify the process of tracking item-specific data. Comprehensive inventory tracking and traceability allow for consistent, high-quality output.

Data-driven reports

Advanced reporting capabilities enable complete enterprise and single-plant visibility, making it easy to spot problem areas and improve processes.

Compliance and traceability

Our plant floor solution supports manufacturing traceability and quality questions for compliance, ensuring your business meets regulatory requirements and can quickly trace products in the event of an issue.

Improve processes and production quality

With data-driven reports and complete plant visibility, managers can quickly identify problem areas and refine processes to improve production efficiency and final product quality.

Waste reduction

The Direct Machine Interface (DMI) prevents under and overrunning jobs, reducing waste (typically by 2%) and employee time needed to guarantee order fulfillment.

Logistics and Supply Chain

Our innovative paper roll stock and corrugated logistics management software solutions enable businesses to implement a highly optimized supply chain solution with traceability and accuracy.

Optimized supply chain

Our technology enables businesses to implement a highly optimized supply chain, increasing efficiency and cost savings.

Complete traceability

CorrSuite offers complete traceability throughout the supply chain, ensuring that businesses can track the movement of paper rolls from the mill to the corrugator and even within manufacturing and converting processes.

Accuracy and efficiency

Errors are reduced, and accuracy is improved across inventory management, shipment planning, and order fulfillment.

Roll stock management

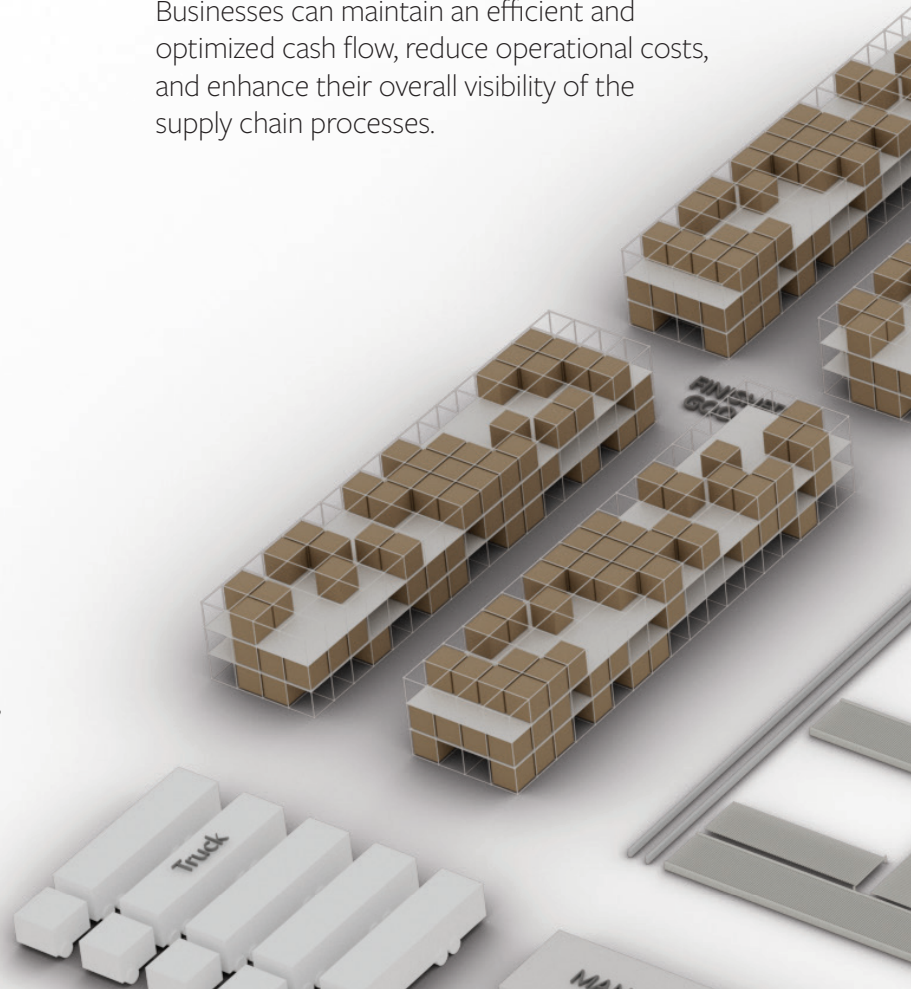
Our roll stock management includes wet-end consumption tracking and RFID capabilities, allowing for precise control and monitoring of paper stock levels.

Trailer and capacity planning

The software provides advanced trailer and capacity planning tools, ensuring fast and efficient shipping and delivery, reducing transport costs.

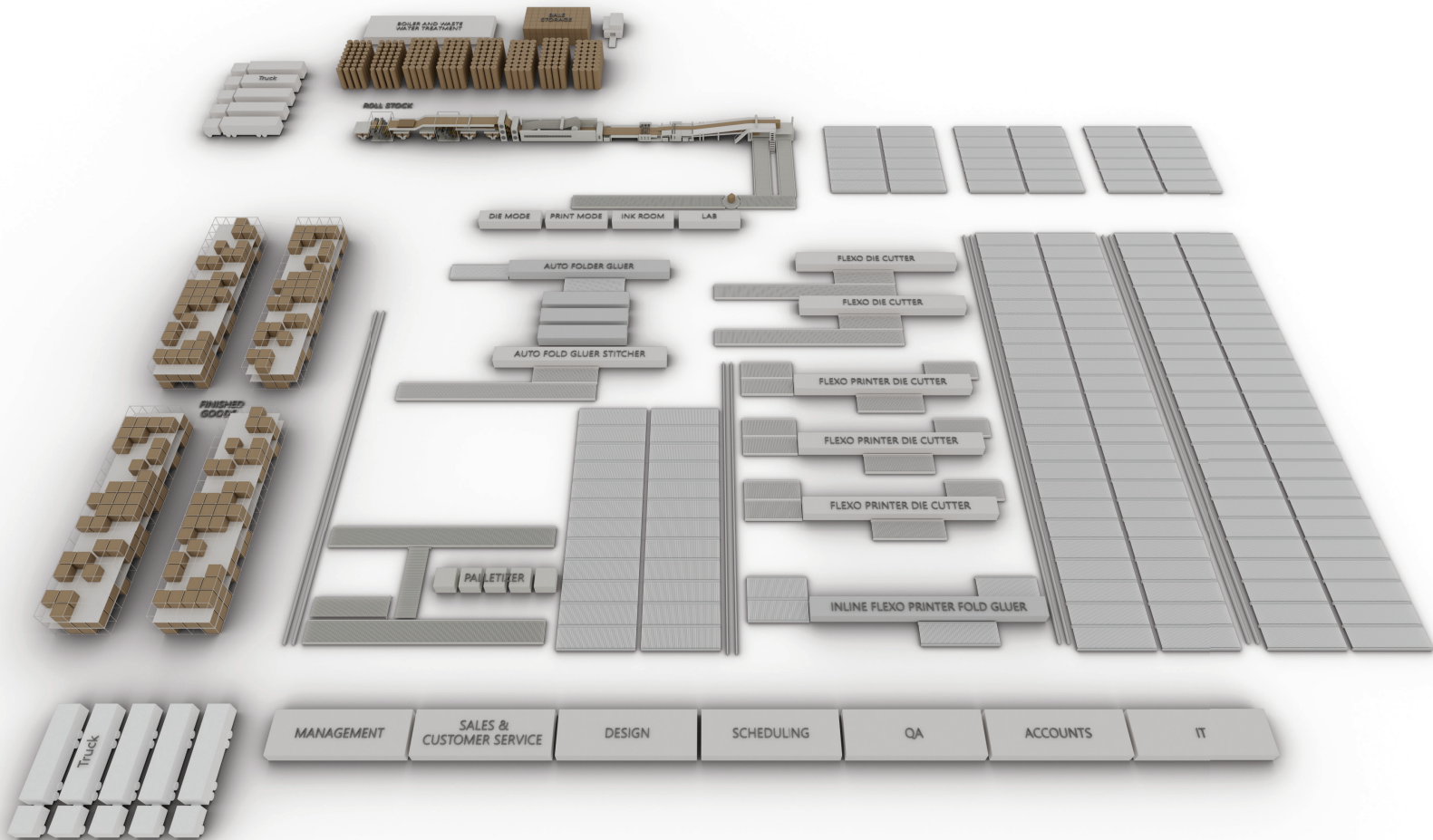
Supply chain visibility

Businesses can maintain an efficient and optimized cash flow, reduce operational costs, and enhance their overall visibility of the supply chain processes.



“CBS helps us to have an overview of the processes, to maintain competitiveness. This contributes to making highly qualified sustainable businesses. The estimating and quoting module has industry-specific characteristics and creates quotes taking into account different measures, areas, weight, and provides a breakdown of all components of the product and service.”

Vice-President, Ceruti, Peru



“All inbound logistics are sent back via CorrTrac to SAP. All movement from the warehouse to the corrugator and vice versa is tracked. Rolls are scanned to identify supplier, amount, and location, and the roll’s movements are tracked and reported back to SAP via CorrTrac.”

FEPA S.p.A., Italy

“The fact that CorrSuite is an end-to-end solution is a plus because we didn’t want to purchase partial tools. The software is intuitive and with a friendly interface - employees do not have difficulties using it.”

Ceruti, Peru



Do More with Less with Escada

At ePS Escada, we understand the importance of maximizing efficiency and maintaining process control in the corrugated industry.

Escada is a 'closed loop' corrugator control system that offers highly sophisticated functionality for efficient wet and dry-end machine control. It gives a new lease on life to aging corrugators and helps manufacturers run their corrugators at the fastest speeds possible while increasing board quality without the high-cost investment needed for new machinery.

With more than 400 systems globally, Escada has a heritage for its innovative approach to closed-loop corrugator control system design.

Unleash unprecedented efficiency:

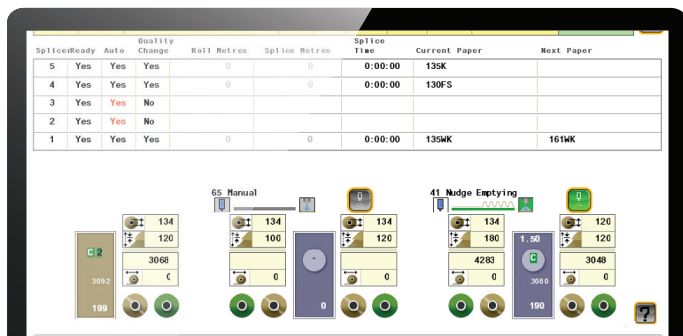
Our state-of-the-art corrugator efficiency solutions leverage advanced automation and real-time data analytics to optimize production lines. From intelligent machine monitoring to proactive maintenance scheduling, Escada empowers you to reduce downtime, minimize waste, and achieve remarkable operational efficiency.

Total process control:

Escada's solutions provide unparalleled visibility and control over every aspect of your corrugated production. With our advanced monitoring systems, you can precisely track key performance indicators, identify bottlenecks, and make data-driven decisions to enhance productivity and quality. Gain complete control over the corrugation process, ensuring consistent results and customer satisfaction.

Tailored to your needs:

We recognize that every corrugated manufacturing facility is unique. Escada's solutions are highly customizable to suit your specific requirements. Whether you operate a small-scale or large production facility, our team of experts will work closely to design a solution that seamlessly integrates with your existing infrastructure, delivering tangible results and maximizing your return on investment.



Exceptional Service and Support

We prioritize customer satisfaction above all else. Our dedicated support team is committed to providing prompt assistance, proactive maintenance, and continuous training to ensure the smooth operation of our solutions.

You can rely on us for ongoing support, upgrades, and future expansions, allowing your business to stay at the forefront of the corrugated industry.

“We believe Escada is the best choice for having an integrated closed-loop corrugator control system. It brings us many advantages, such as increased quality due to higher run speeds.”

Dunapack Packaging, Europe

25% Increase in production (up to)

0.5-2.5% Reduction in waste

25% Reduction in starch consumption



Maximize your Productivity and Profits with Profile

Escada Profile is a game-changing closed-loop process control solution that redefines corrugator performance, enabling you to achieve unmatched speed and efficiency.

With its innovative closed-loop system, combining the dry and wet ends, we empower your production line to operate at the highest speeds possible, revolutionizing how you manufacture corrugated boards.

“Our MSF per corrugator hour has increased in less time – we’re running what we did in 5 days now in 4 – a 20% increase in productivity.”

Golden West Packaging Group, USA

Maximize production and quality:

By harnessing the power of our closed-loop system, customers report remarkable increases in production, with improvements of up to 25% in productivity. This enhanced speed directly translates into higher board quantity without compromising on quality.

Consistent, repeatable quality:

Profile delivers improved repeatability and consistency by reducing variation in the production process. Say goodbye to unpredictable outcomes and welcome a streamlined, controlled manufacturing environment. Achieve higher levels of product quality, minimize quality returns, and build a reputation for delivering excellence to your customers.

Enhanced confidence and wider capabilities:

Profile instills confidence in your production crew, enabling them to run wider board widths efficiently. This newfound confidence significantly improves corrugator yield, with potential increases of up to 10%.

Reduce waste and starch consumption:

Our advanced system significantly decreases warp and delamination issues and ensures waste reduction of typically 0.5%, resulting in substantial cost savings and a more sustainable approach to production. Additionally, Profile optimizes starch consumption, leading to starch reductions of up to 25%. Embrace efficiency while minimizing waste and maximizing profitability.

Increase average run speeds:

Enjoy an increase in production speed, ranging from 5% to 25%. With Profile, you can meet deadlines, fulfill orders more efficiently, and optimize your operational throughput, positioning your business as a leader in the industry.

Enhance conversion throughput:

With reduced warp and delamination, Escada Profile enables smoother conversion processes, improving throughput and minimizing disruptions. Experience streamlined operations that optimize your overall efficiency.

Streamline workforce and reduce costs:

Profile's user-friendly system reduces reliance on specific skills, making recruiting and training personnel easier. With simplified processes, such as quick reel changes and seamless splicing, the need for specialized expertise diminishes, allowing you to streamline your workforce, reduce training costs, and optimize resource allocation.

Minimize returns:

By guaranteeing the highest quality and durability standards, Profile helps you reduce customer returns significantly. Deliver corrugated packaging that exceeds expectations, enhancing customer satisfaction and building trust in your brand.

Delight your customers:

Profile equips you to meet the specific demands of your most important customers. Tailor your corrugated solutions precisely, positioning your business as a reliable and trusted partner and strengthening customer relationships.

Market exceptional performance:

With the exceptional board consistency provided by Profile, market your product based on its remarkable performance. Gain a competitive edge and potentially reduce the need for higher-grade paper, optimizing cost-efficiency without compromising quality.

Embrace sustainable practices:

Profile aligns with environmental and sustainability goals by optimizing energy consumption and minimizing raw material waste.

“Our machine speeds have increased, board consistency has improved, and we’ve calculated that it’s resulted in significant annual savings.”

Smurfit Kappa, Germany



Syncro 7: Perfect Harmony. Maximum Performance

Escada Syncro is a single-point corrugator control system that maximizes efficiency and productivity - seamlessly integrating your corrugator dry end and wet end operations.

It covers every phase of corrugator application, from the roll stands to the take-off conveyors. Syncro ensures harmonious operation through flexible interfaces to any mixture of machines, delivering maximum performance every time.

By implementing Syncro, you can effectively manage wet end functions while maximizing the output of the dry end. You can also minimize downtime, waste, and inconsistencies, creating a consistent and reliable production process.

For the dry end

Syncro Dry End Control connects your production planning system with your dry end machinery, automatically aligning orders and performing efficient automatic order changes at maximum speeds.

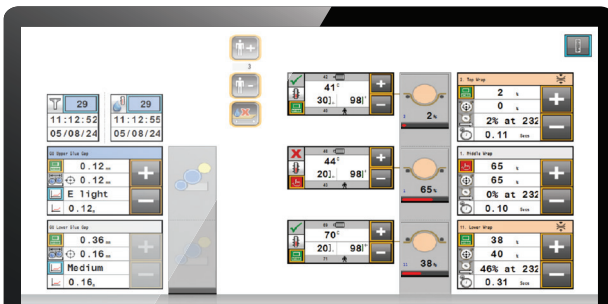
Seamless data integration: Syncro ensures smooth communication between your office scheduling system and all dry end machinery, streamlining your production line.

Real-time production calculations: Gain precise real-time measurements of sheets, meters, waste, and speed, providing invaluable insights to optimize your corrugated operations.

Streamlined order change control: Automatic order change control eliminates production gaps, ensuring uninterrupted workflow and increased efficiency.

Automated downtime recording: Syncro captures downtime events, providing vital data for process improvement and troubleshooting.

Seamless integration with Next Gen Clarity: Enjoy comprehensive reporting and insights through a seamless data link between Syncro and Next Gen Clarity.



Machinery flexibility: Change dry end machinery independently, regardless of the manufacturer, ensuring compatibility and adaptability.

Enhanced printing capabilities: Effortlessly print pallet labels or integrate with other systems, streamlining your labeling processes.

Integration with materials handling: Syncro interfaces smoothly with your materials handling system, creating a harmonized and efficient workflow.

Digital overhead display: Keep your team informed with a digital overhead display, improving visibility and access to critical production information.

Intelligent Speed Control (ISC): Syncro's ISC optimizes production output by adapting speed based on real-time conditions and increasing efficiency.

“Since Escada, restart waste, warp and delamination and speed changes have all improved.”

DS Smith, UK

For the wet end

Syncro Wet End Control provides a complete range of efficient wet end machine control functions. Some of the integrated modules include butt roll calculation and display, end-of-roll splicing (including split roll function), splice removal, automatic bridge contents control, bridge contents validation, and synchronized splicing. Seamless integration with the dry end at quality change ensures reduced waste and increased productivity.

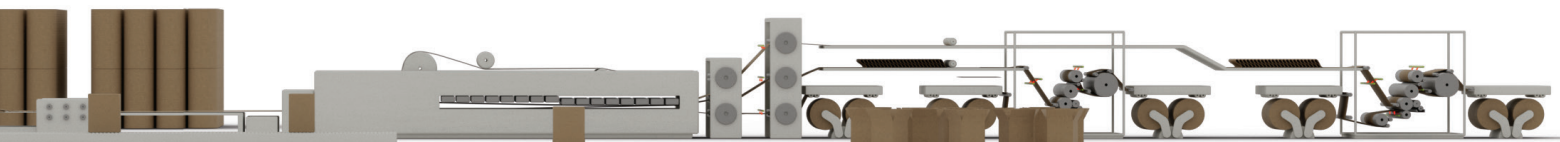
Bridge contents control: Achieve precise control, ensuring consistent quality and performance.

Automated end-of-roll splicing: Syncro automates end-of-roll splicing, minimizing downtime and manual interventions.

Synchronized splicing and order change: Seamlessly transition between wet end orders with synchronized splicing, reducing setup times.

Break detection: Advanced detection systems identify bridge web and splicer paper breaks, minimizing disruptions.

Automatic waste tracking and dry spot removal: Syncro enhances waste tracking and automates dry spot removal, ensuring smooth production.



Traceability and Performance Analysis

With Escada Next Gen Clarity, you can effortlessly oversee your entire operation by harnessing the power of data from all of your Escada control systems.

Our innovative solution empowers you to analyze detailed findings through a transparent and easy-to-use data reporting system, ensuring no crucial information slips through the cracks.

Unparalleled data visibility: Next Gen Clarity is a centralized hub that integrates data from all Escada control systems. This comprehensive approach provides you with a holistic view of your operations, eliminating data silos and enabling you to make informed decisions with ease.

Intuitive management interface: Your data is presented in a way that is visually appealing and easy to understand, allowing you to quickly extract meaningful insights and drive actionable outcomes..

Efficient and rapid analysis: Next Gen Clarity enables you to perform analysis efficiently and rapidly, saving you valuable time. Its streamlined interface and powerful analytics capabilities empower you to delve deep into your data, identify patterns, and make data-driven decisions faster.

Customizable data management: Tailor Next Gen Clarity to your specific needs with its fully customizable features. Seamlessly manage and organize your data according to your preferences, ensuring you have the correct information. Furthermore, schedule automated production of custom reports, simplifying your data analysis workflow.

Real-time process monitoring: Keep a close eye on your production with the Next Gen Clarity Dashboard. This intuitive tool allows you to track key parameters such as speed, waste, warp, and sensors. Instantly chart and evaluate these measurements, gaining invaluable insights into your process efficiency and identifying areas for improvement.

Bespoke reporting capabilities: In addition to the array of standard reports integrated into Next Gen Clarity, our solution offers the flexibility to create bespoke reports tailored to your specific requirements. This customization ensures you receive the precise information you need, empowering you to drive operational excellence and achieve your goals.



Intelligent Recipe Decision-Making

Our extensive experience in analysis and adaptation has propelled us to transcend conventional reliance on historical data.

We introduce a paradigm shift with Smart SetPoint (SSP) by incorporating additional variables such as environmental conditions and raw material data. Our SSP technology enables real-time, online decision-making, revolutionizing the corrugated manufacturing process.

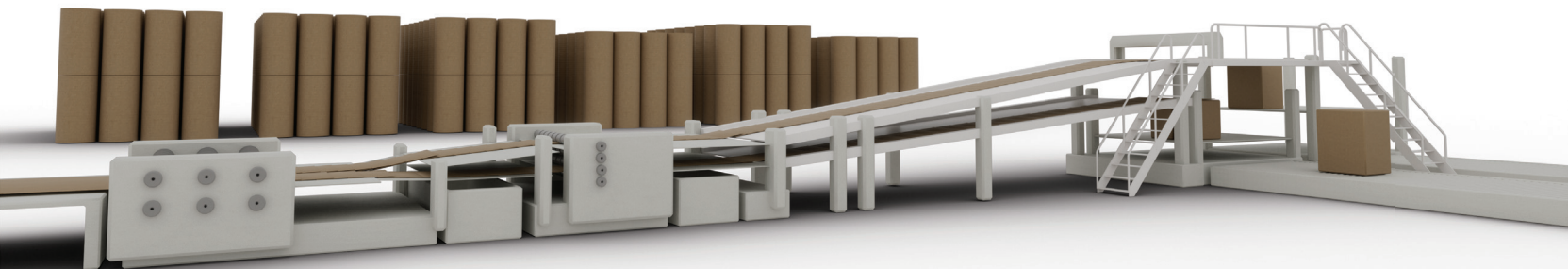
Leveraging its advanced capabilities, manufacturers can achieve unparalleled operational excellence, product quality, and adaptability. The SSP solution empowers organizations to drive continuous improvements, reduce waste, and maximize manufacturing performance.

Enhanced recipe management: SSP centralizes multiple process recipes per board grade, allowing for easy comparison and selection of the optimal recipe based on factors like season, shift, paper width, and supplier. This ensures consistent product quality and maximizes operational efficiency.

Advanced product analysis: SSP links final product analysis to specific recipes, associating board samples with machine settings for comprehensive evaluation and identification of improvement areas throughout the production process.

Real-time performance monitoring: SSP provides machine operators with real-time data through intuitive screens, ensuring corrugators operate according to prescribed recipes and deliver high-quality products. It also suggests recipe improvements, supporting informed decision-making, and continuous quality enhancements.

Streamlined decision-making: SSP integrates real-time data and suggests recipe improvements on operator screens, optimizing decision-making for improved operational efficiency and product quality. This fosters seamless collaboration between operators and machines, creating a more agile and responsive manufacturing environment.



Intelligent Speed Control: Autopilot for the Corrugator

Introducing Escada Intelligent Speed Control (ISC), an automatic speed control system for the corrugator designed to maximize production speeds for all quality grades.

Our cutting-edge system is designed to revolutionize your production processes and deliver compelling benefits.

With Escada Intelligent Speed Control (ISC), you can transform your corrugator operations, achieving unparalleled productivity, significant cost savings, and customer satisfaction.

Accelerate production: Boost your corrugator's average run speed by 5% to 25%, driving remarkable productivity improvements and higher output levels.

Minimize waste: Reduce waste generated during production by 5% to 10%. ISC ensures optimal utilization of materials, minimizing unnecessary wastage and enhancing sustainability.

Maximize cost savings: Save substantially on starch consumption, with savings ranging from 5% to 20%. ISC's adjustment of starch application optimizes usage, reducing material costs and improving profitability.

Enhance product quality: Reduce customer complaints by 5% to 20% and elevate customer satisfaction. ISC ensures consistent production speeds, resulting in improved product consistency and fewer issues experienced by your valued customers.

Reduce labor costs: Say goodbye to manual adjustments and hello to automated speed control. By eliminating the need for manual intervention, ISC reduces labor costs, freeing up resources for other critical tasks.

Streamline operations: ISC's user-friendly interface simplifies your workflow and minimizes training time. Whether you have new or experienced employees, integrating ISC into your operations is seamless, allowing you to unlock its benefits quickly.

Optimize your Steam Efficiency and Maximize Energy Savings

Escada Energy offers a ground-breaking solution that transforms how you manage steam control, optimize electrical energy consumption, and drive down costs.

Our intelligent steam control module is designed to deliver exceptional efficiency while reducing wasteful energy practices.

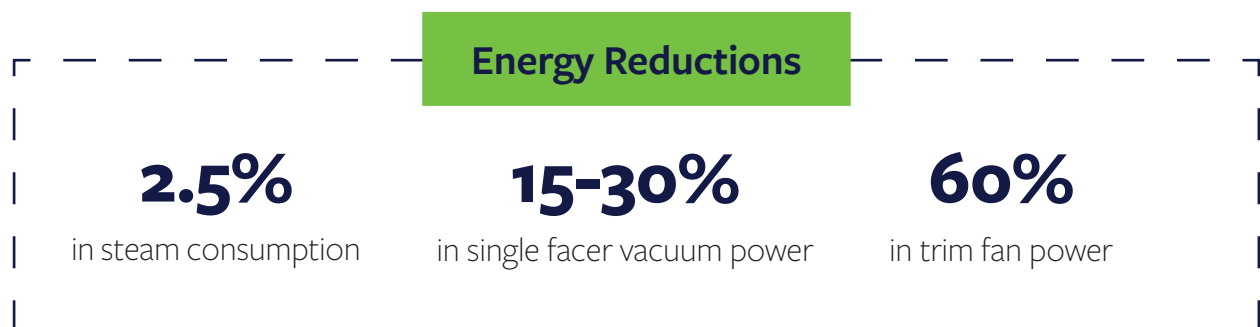
Discover Escada Energy's transformative potential and unlock a new era of steam efficiency, energy savings, and cost reduction.

Enhanced efficiency: With Energy, you can achieve unparalleled steam efficiency. Our module employs an intelligent steam calendar feature, enabling automatic “steam up” and “steam down” according to a predefined schedule. Energy eliminates energy waste and maximizes productivity by ensuring your machines always operate efficiently.

Energy cost reduction: Say goodbye to skyrocketing energy costs. Energy goes beyond optimizing steam efficiency by automatically steaming down when the corrugator is inactive for a specified duration. This proactive approach minimizes energy consumption during downtime, resulting in significant cost savings for your business.

Customizable control: We understand that every operation is unique. Energy offers a high level of customization, allowing you to control steam based on flute or location. Whether you prefer automatic or manual settings, our module adapts to your specific requirements, empowering you with unprecedented control over your steam management process.

Seamless integration: By combining the power of Energy with seamless integrations into Syncro 7 and Next Gen Clarity, you'll enjoy a cohesive and hassle-free steam management ecosystem.



Optimize Asset Performance and Minimize Downtime

Stay ahead of maintenance needs and prevent costly disruptions with Escada's Reliability module.

Designed to work seamlessly with Syncro and Next Gen Clarity solutions, our predictive maintenance module promptly alerts operators when assets are due for renewal or require service attention.

With real-time monitoring of equipment usage on the corrugator, the Reliability module empowers operators by providing timely alerts for addressing potential issues.

Keeping production operators informed and in control of maintenance schedules enables them to take proactive measures, avoid unexpected downtime, and optimize overall equipment effectiveness (OEE).

Experience the confidence of maintaining peak asset performance while minimizing costly disruptions with Reliability.

Proactive maintenance: The Reliability module allows you to quickly identify which assets require maintenance. Efficiently schedule the necessary maintenance tasks, ensuring optimal resource utilization and maximizing production output.

Enhanced efficiency: The Reliability module allows you to identify which assets require maintenance at a glance quickly. Efficiently schedule the necessary maintenance tasks, ensuring optimal utilization of resources and maximizing production output.

Prevent unplanned downtime: Reliability helps you avoid costly unplanned downtime by mitigating potential equipment failures. It also minimizes disruptions to your production processes and allows you to consistently meet customer demands, helping you maintain a competitive edge.

Improved Overall Equipment Effectiveness (OEE): Our reliability module directly contributes to improving OEE by streamlining maintenance processes and reducing unplanned downtime. Enhance asset performance, optimize production efficiency, and increase your bottom line.

OptiSplice: Optimize Paper Consumption

We understand the challenges manufacturers face with increased paper costs.

Escada's innovative OptiSplice module seamlessly integrates with its Syncro system at the wet end to detect the early signs of paper tearing.

“In addition to the increase in speed, we are now experiencing less than 10 minutes of downtime per shift.”

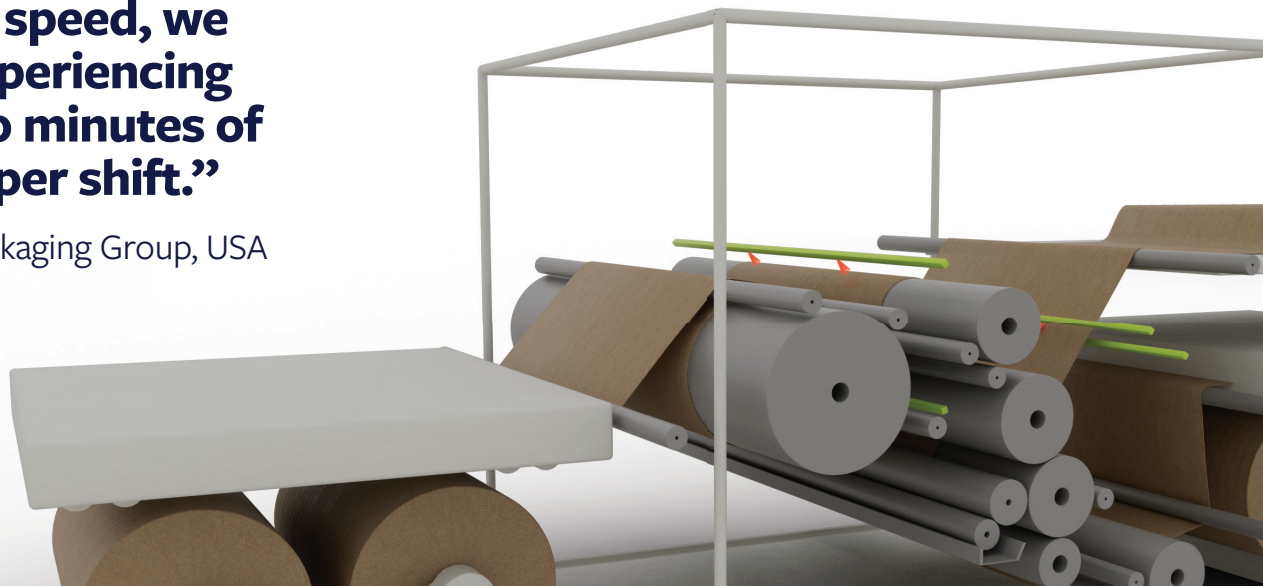
Golden West Packaging Group, USA

OptiSplice ensures uninterrupted production and prevents costly corrugator downtime caused by missed splices.

OptiSplice's advanced sensors and intelligent algorithms detect when the paper begins to tear away from the core as the roll nears its end. Swiftly initiating an end-of-roll splice guarantees a smooth transition and uninterrupted paper feed. Say goodbye to production halts and hello to enhanced productivity.

Moreover, OptiSplice optimizes paper utilization by running the paper right to the end of the roll, thanks to its exceptional paper quality assessment capabilities. This means you can achieve maximum utilization of your valuable paper resources, minimize waste, and maximize your ROI.

Confidently streamline your corrugated manufacturing process, reducing downtime, increasing efficiency, and ensuring consistent output quality with OptiSplice.



Optima: Transform Roll Stock Management

Transform your plant floor into a streamlined, data-driven powerhouse. Unleash the potential of optimized roll stock management and seize the advantage of a rapid ROI.

Escada Optima is a cutting-edge Integrated roll stock system designed to streamline your operations and enhance your bottom line. By leveraging advanced RFID or barcode technology, Optima optimizes the utilization of part (a.k.a butt) rolls, reduces stock levels, and empowers you to order the paper you need based on known requirements precisely. With Optima, your plant floor becomes an intelligent hub that tracks every roll movement, records paper usage, and precisely guides and monitors operations.

Gain unparalleled control and visibility:

Optima's real-time tracking capabilities provide complete visibility and traceability of paper usage. By tracking rolls on the corrugator, you have the power to ensure that your customers' needs are always met promptly, eliminating costly delays and enhancing customer satisfaction. With this comprehensive oversight, you can proactively manage your inventory and reduce paper upgrades, saving significant costs.

Empower management with powerful insights:

Optima seamlessly integrates with a robust management reporting tool, delivering comprehensive data and insights at your fingertips. Harness the power of Optima's reporting to unlock valuable analytics, make data-driven decisions, and optimize your overall operations. From tracking paper consumption trends to identifying potential bottlenecks, Optima empowers your management team to enhance operational efficiency and drive continuous improvement.

Rapid return on investment:

Investing in Optima is an investment in rapid ROI. By optimizing part-roll usage, reducing stock levels, and ensuring accurate ordering, you can achieve significant cost savings and improve your bottom line quickly. With increased efficiency, reduced waste, and enhanced customer satisfaction, Optima provides a compelling return on investment, helping you stay ahead in a competitive market.





Continuous Improvement

We are committed to continuous improvement and regular development of our solutions.

We strive to stay ahead of industry trends and technological advancements, ensuring that our software remains innovative and relevant to the evolving needs of corrugated manufacturers.

Our dedication to ongoing enhancement means that you can trust us to provide you with cutting-edge solutions that drive your business's efficiency, productivity, and success.

“Thanks to our partnership with Escada and other OEMs, we’ve successfully integrated our systems to work seamlessly together.”

CorrBoard., UK

Compatible Integrations

Escada's technology is fully compatible with all OEM corrugators, ensuring seamless integration into any production line. Escada's flexible software enhances operational capabilities without costly overhauls, whether using legacy equipment or the latest machinery. This universal compatibility allows for modernization and optimization, maximizing investment and efficiency. Escada provides a future-proof system that adapts to your business and supports diverse corrugator configurations.

Moreover, Escada integrates seamlessly with both lean and traditional manufacturing models, offering unmatched flexibility and efficiency. Its advanced software, with a user-friendly interface, streamlines processes, reduces waste and boosts productivity in lean environments while maintaining precision and consistency in traditional settings. Escada enables manufacturers to uphold high standards, swiftly adapt to market demands, and continuously improve.

Continuous Development

CorrVision

Escada's CorrVision technology revolutionizes installation and engineering assistance in the corrugated manufacturing industry.

With the power of remote inspections, CorrVision reduces the need for on-site personnel, enhancing safety and mitigating risks.

Through real-time data sharing, Escada CorrVision empowers project teams to make agile, well-informed decisions. Its hands-free operation boosts worker efficiency and productivity, wrapped in a rugged, safety-compliant package.

CorrVision is a cost-effective solution that streamlines operations and frees up valuable time for staff. Additionally, its scalability makes it a game-changer for manufacturers worldwide.

Stacker

Stacker is an advanced vacuum and brush control system that reduces downtime and obsolescence.

HydroBalance

HydroBalance is an enhanced, cost-effective, closed-loop moisturizing control solution. It helps you run non-conforming paper stock and corrects warp issues from imbalanced liners, enabling you to utilize all roll stock.

Detect

Our innovative Detect module is engineered to identify paper breaks on the corrugator in real time, precisely pinpointing critical locations such as the splicer exit and single-facer exit belts. By swiftly detecting these paper breaks, we empower you to take immediate action, minimizing waste and downtime and boosting overall productivity.

Here's how the Detect module works:

When a paper break is detected, the system automatically halts the corrugator, preventing further damage and allowing your operators to address the issue swiftly.

Our intuitive Syncro dashboard provides instant notifications to your operators, indicating which sensors have been triggered.

This real-time information empowers your team to make informed decisions promptly, reducing response times and optimizing production flow.



OptiTrim

OptiTrim is an advanced real-time paper shrinkage measurement solution. We have pioneered a state-of-the-art solution to measure and analyze paper shrinkage during the corrugator process. Utilizing advanced 2D distance measurement lasers and strategically positioned sensors, OptiTrim captures detailed data on paper width before and after heating. This innovative approach enables us to provide accurate insights into shrinkage, allowing you to predict warp and optimize trim efficiency.

By integrating shrinkage data with wrap arm position and paper temperature, our comprehensive analysis helps you achieve unparalleled precision and efficiency in your corrugation operations. Embrace this cutting-edge technology to reduce waste, enhance product quality, and elevate your manufacturing process to new heights of performance.

“Escada Profile has reduced our waste significantly, and our customers are delighted with the quality of the board we deliver.”

FEPA S.p.A., Italy

Advanced Auditing

Escada delivers robust solutions to support Advanced Auditing by integrating the 4Ms (Man, Machine, Method, Material) into its comprehensive suite of tools tailored for the industry.

Escada’s innovative software platform ensures precise resource performance tracking and analysis, optimizing workforce efficiency through detailed training and competency assessments. State-of-the-art machine monitoring capabilities enable proactive maintenance and performance optimization, minimizing downtime and enhancing productivity. Escada’s process auditing refines methods, ensuring adherence to best practices and streamlined operations. Our material management solutions optimize the consumption of raw materials, reducing waste and producing superior product quality.

By leveraging Escada’s advanced auditing solutions, manufacturers can achieve unparalleled improvements in quality control, operational efficiency, cost savings, and sustainability.

Scan to learn about
Escada innovations:



Ready to optimize your corrugated operations and boost your competitive edge?

Visit our website to explore our industry-specific solutions and discover how
eProductivity Software can empower your business for success.



epackagingsw.com



eProductivity Software is a leading global provider of industry specific business and production software technology for the packaging and print industries. The company's integrated and automated software offerings and point solutions are designed to enable revenue growth and drive operating and production efficiencies. eProductivity Software is headquartered in Pittsburgh, Pennsylvania with offices worldwide. With over thirty years dedicated to delivering best-in-class technology to the packaging and printing industries, it is the company's deep held philosophy that eProductivity Software succeeds when its customers thrive. For more information reach us at contact@epssw.com.